

Overall dimensions - Ø16

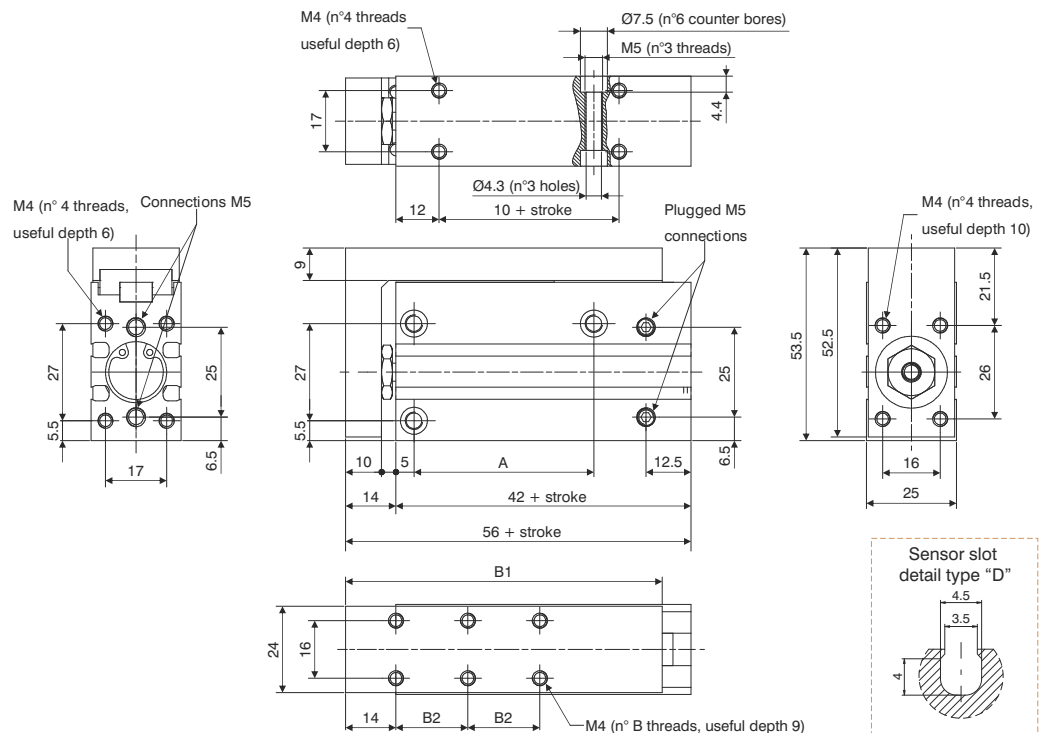


Table of dimensions

	Standard strokes								
	5	10	15	20	25	30	40	50	60
A	20	30	40	50	60				
B1	58	68	78	88	98	108			
B2	10	20	30	20	25	30			
B		4					6		
Weight (gr.)	215	230	250	260	280	290	325	350	390

Overall dimensions - Ø20

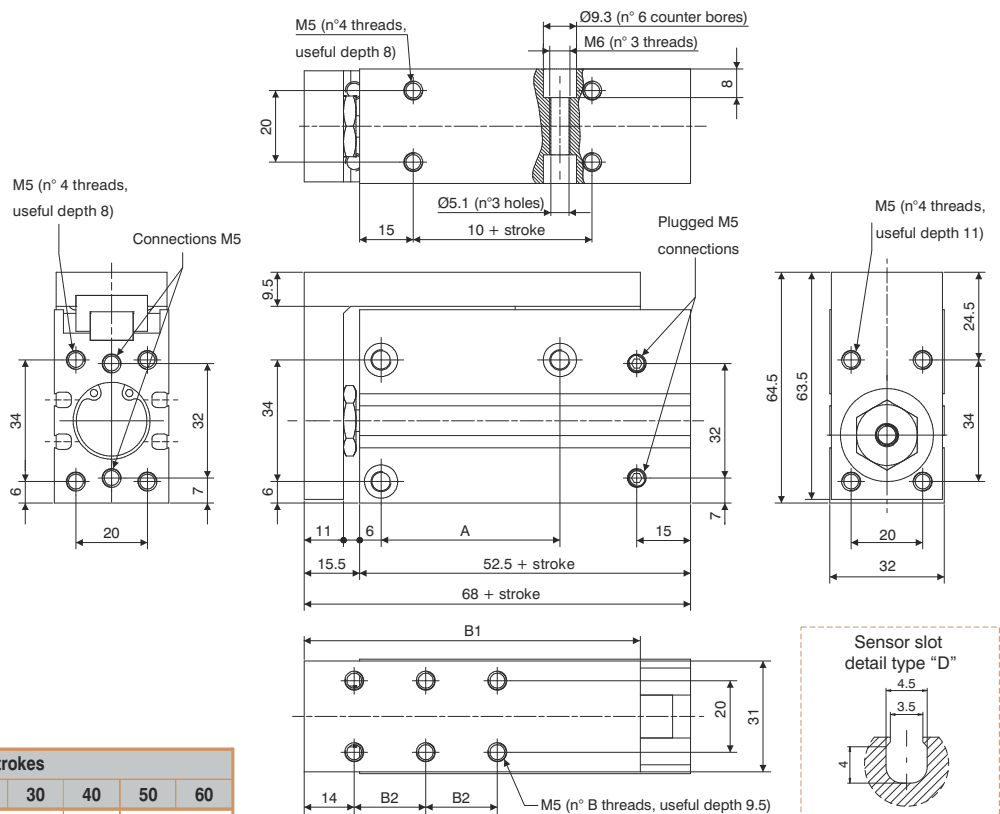
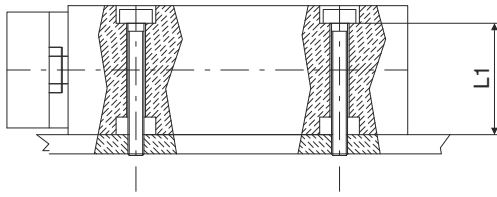


Table of dimensions

	Standard strokes								
	5	10	15	20	25	30	40	50	60
A	20	25	40	50	70				
B1	64	74	84	94	104	114			
B2	10	20	30	20	25	30			
B		4					6		
Weight (gr.)	440	455	490	505	540	560	600	660	700

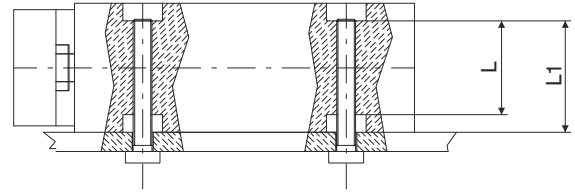


LATERAL (THROUGH SCREW)



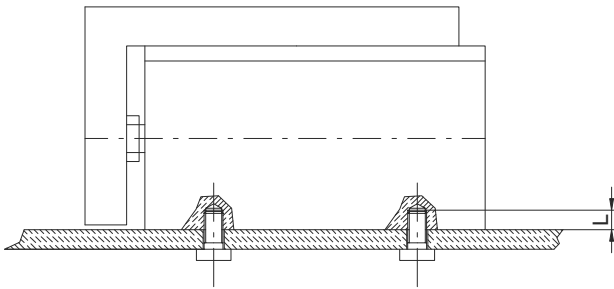
	SCREW	Maximum torque (Nm)	L1
Ø10	M4	2.5	15.6
Ø16	M4	2.5	20.6
Ø20	M5	5.1	24

LATERAL (THREADED HOLE)



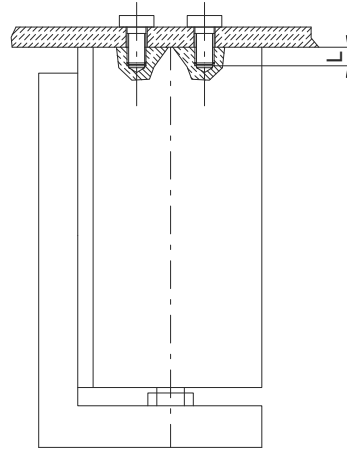
	SCREW	Maximum torque (Nm)	L1	L
Ø10	M5	5.1	15.6	11.2
Ø16	M5	5.1	20.6	16.2
Ø20	M6	8.1	24	16

VERTICAL (THREADED HOLE)



	SCREW	Maximum torque (Nm)	L
Ø10	M4	2.5	6
Ø16	M4	2.5	6
Ø20	M5	5.1	8

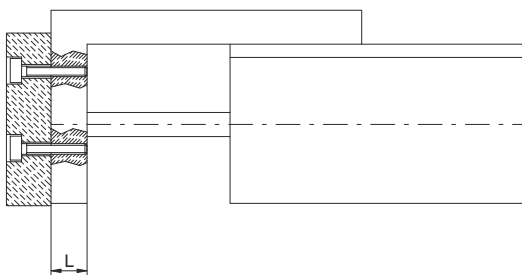
AXIAL (THREADED HOLE)



	SCREW	Maximum torque (Nm)	L
Ø10	M4	2.5	6
Ø16	M4	2.5	6
Ø20	M5	5.1	8

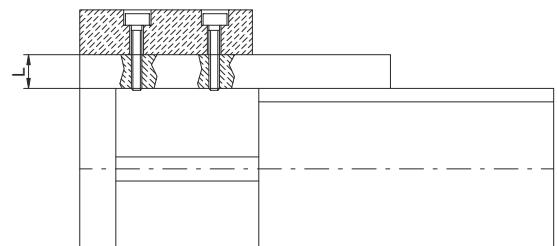
LOAD

FRONTAL MOUNTING

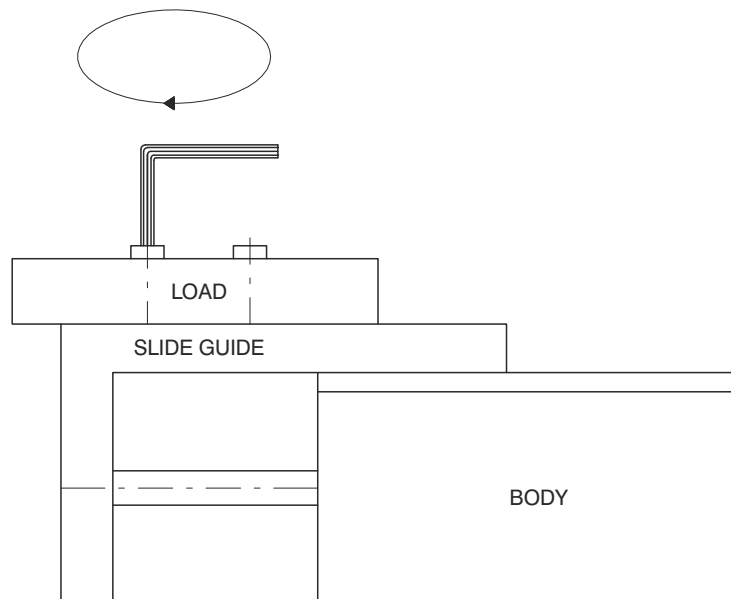


	SCREW	Maximum torque (Nm)	L
Ø10	M4	2.5	7.5
Ø16	M4	2.5	10
Ø20	M5	5.1	11

BACK MOUNTING

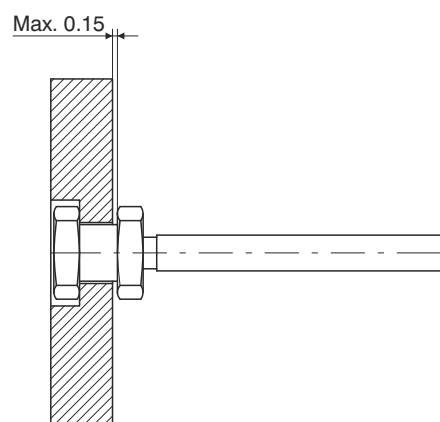


	SCREW	Maximum torque (Nm)	L
Ø10	M4	2.5	8
Ø16	M4	2.5	9
Ø20	M5	5.1	9.5



ATTENTION : Slide must be blocked before fixing the load
this operation should not be done by blocking the body as the
guide could get damaged.

CONNECTION BETWEEN PLATE AND ROD



The fluctuating connection, maximum clearence 0.15mm as indicated by the arrow

Plate deviation (arrow) when the load is applied on the spot indicated with the arrow and the unit completely extended

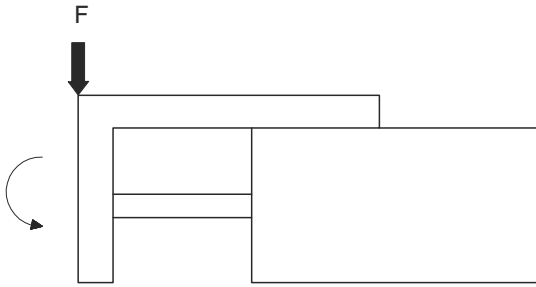
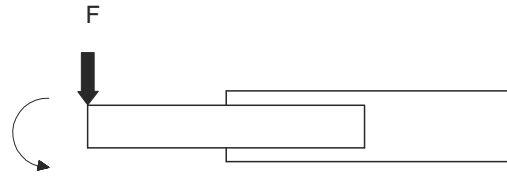
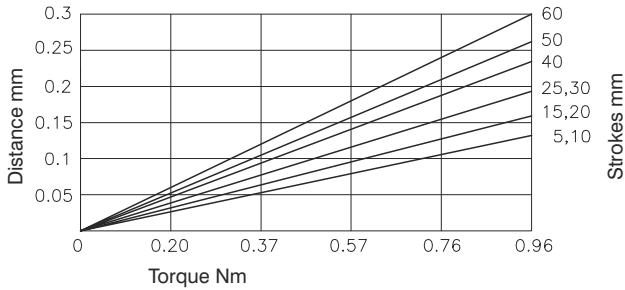


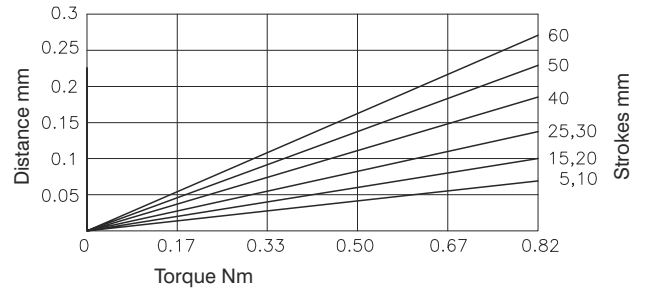
Plate deviation (arrow) when the load is applied on the spot indicated with the arrow and the unit completely extended



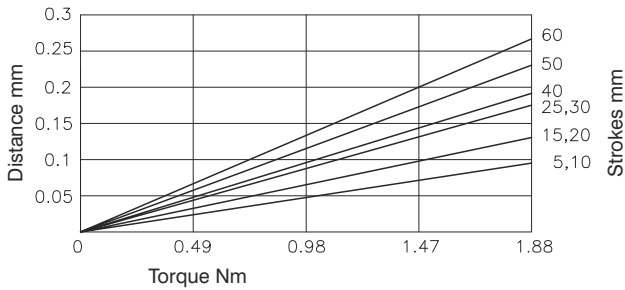
Ø10



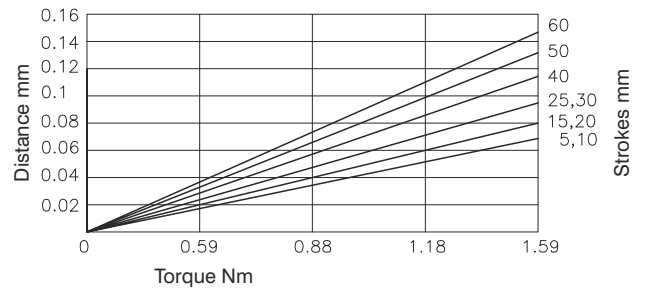
Ø10



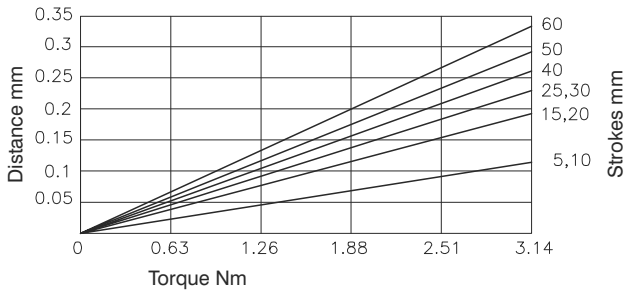
Ø16



Ø16



Ø20



Ø20

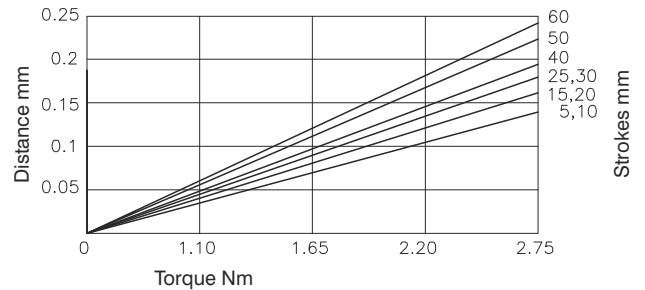
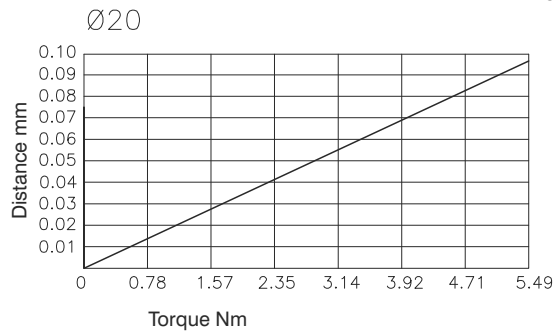
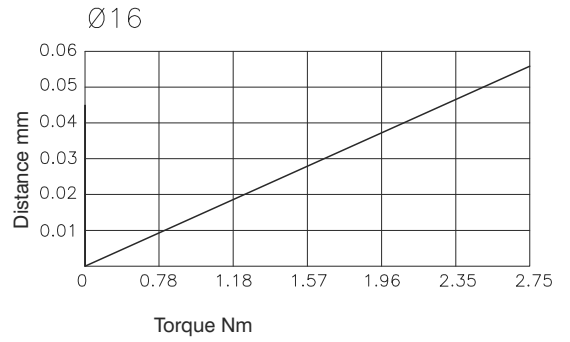
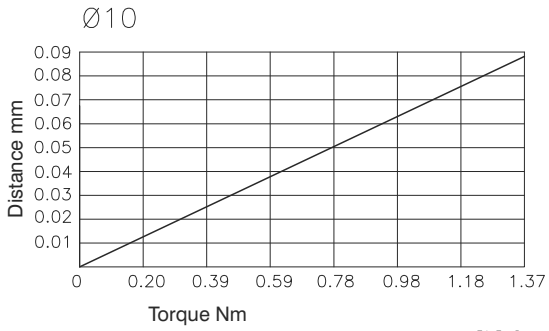
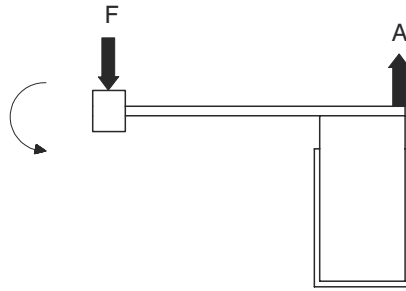


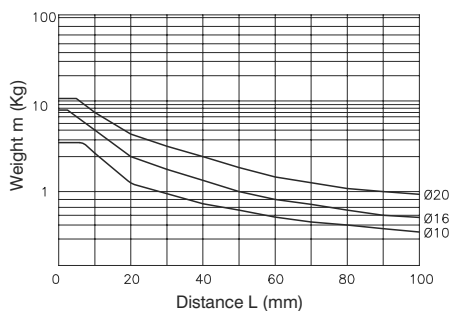
Plate deviation (compared to A) when the load is applied on the spot indicated with the arrow and the unit completely extended



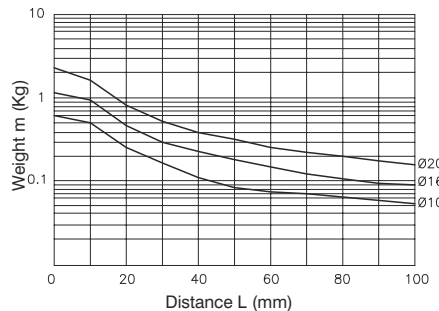
MOUNTING POSITION	VERTICAL			HORIZONTAL								
MAX. SPEED (mm/sec.)	100	200	300	100			200			300		
Load eccentricity				50	100	200	50	100	200	50	100	200
Selection graphs	1	2	3	4	5	6	7	8	9	10	11	12

Selection graphs 1 - 3 (vertical mounting)

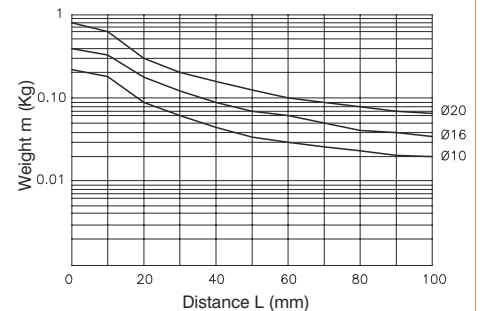
Drawing 1
Maximum speed 100 mm/s or lower



Drawing 2
Maximum speed 300 mm/s or lower

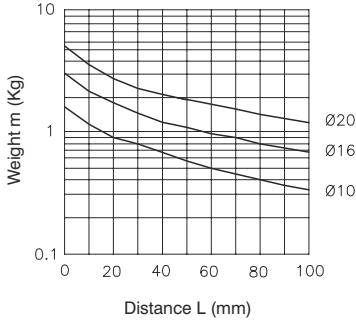


Drawing 3
Maximum speed 500 mm/s or lower

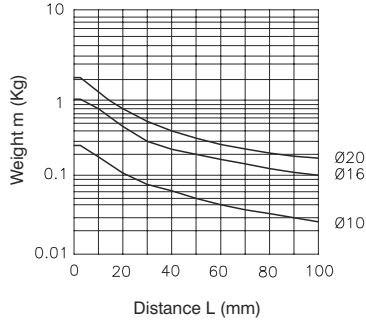


Selection graphs 4 - 12 (horizontal mounting)

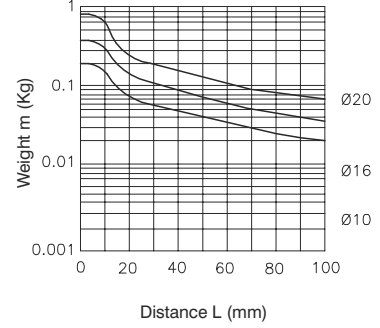
Drawing 4 load eccentricity 50mm
Maximum speed 100 mm/s or lower



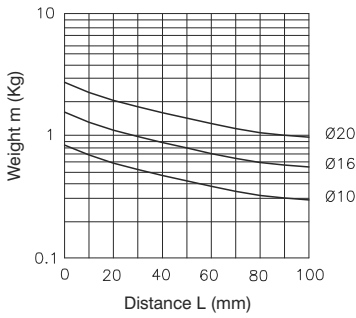
Drawing 7 load eccentricity 50mm
Maximum speed 300 mm/s or lower



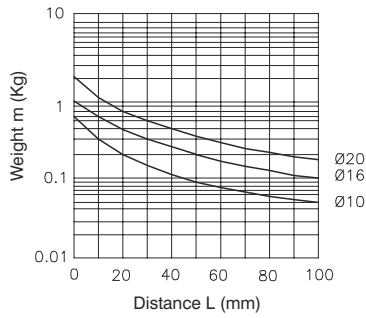
Drawing 10 load eccentricity 50mm
Maximum speed 500 mm/s or lower



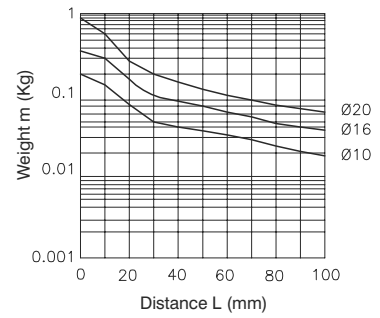
Drawing 5 load eccentricity 100mm
Maximum speed 100 mm/s or lower



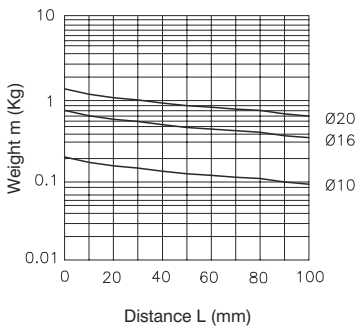
Drawing 8 load eccentricity 100mm
Maximum speed 300 mm/s or lower



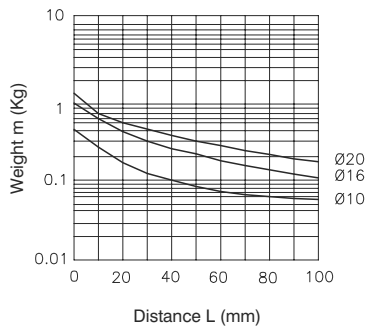
Drawing 11 load eccentricity 100mm
Maximum speed 500 mm/s or lower



Drawing 6 load eccentricity 200mm
Maximum speed 100 mm/s or lower



Drawing 9 load eccentricity 200mm
Maximum speed 300 mm/s or lower



Drawing 12 load eccentricity 200mm
Maximum speed 500 mm/s or lower

