

2

3/2	Solenoid - Spring	Ordering code	Solenoid - Spring	5/2			
 		514/N.0.1.M2	 				
		<table border="1" style="width: 100%; border-collapse: collapse;"> <tr><td style="text-align: center;">TYPE</td></tr> <tr><td>32 = 3 ways</td></tr> <tr><td>52 = 5 ways</td></tr> </table>			TYPE	32 = 3 ways	52 = 5 ways
TYPE							
32 = 3 ways							
52 = 5 ways							
Weight gr. 390 Minimum working pressure 2,5 bar				Weight gr. 450 Minimum working pressure 2,5 bar			
Operational characteristic		Fluid	Max working pressure (bar)	Temperature °C	Flow rate at 6 bar with Δp=1 (Nl/min)	Orifice size (mm)	Working ports size
		Filtered and lubricated air	10 bar	Min. -5°C Max. +50°C	1030 Nl/min	mm 7	G 1/4"

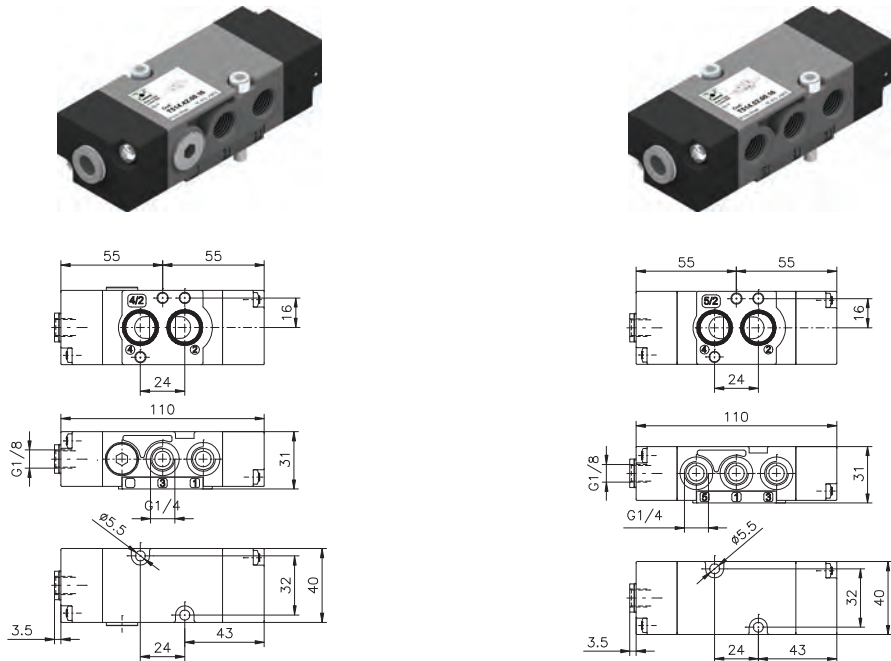
3/2	Solenoid - Differential	Ordering code	Solenoid - Differential	5/2			
 		514/N.0.12.M2	 				
		<table border="1" style="width: 100%; border-collapse: collapse;"> <tr><td style="text-align: center;">TYPE</td></tr> <tr><td>32 = 3 ways</td></tr> <tr><td>52 = 5 ways</td></tr> </table>			TYPE	32 = 3 ways	52 = 5 ways
TYPE							
32 = 3 ways							
52 = 5 ways							
Weight gr. 390 Minimum working pressure 2,5 bar				Weight gr. 450 Minimum working pressure 2,5 bar			
Operational characteristic		Fluid	Max working pressure (bar)	Temperature °C	Flow rate at 6 bar with Δp=1 (Nl/min)	Orifice size (mm)	Working ports size
		Filtered and lubricated air	10 bar	Min. -5°C Max. +50°C	1030 Nl/min	mm 7	G 1/4"

3/2	Solenoid - Solenoid	Ordering code	Solenoid - Solenoid	5/2			
 		514/N.0.0.M2	 				
		<table border="1" style="width: 100%; border-collapse: collapse;"> <tr><td style="text-align: center;">TYPE</td></tr> <tr><td>32 = 3 ways</td></tr> <tr><td>52 = 5 ways</td></tr> </table>			TYPE	32 = 3 ways	52 = 5 ways
TYPE							
32 = 3 ways							
52 = 5 ways							
Weight gr. 390 Minimum working pressure 2,5 bar				Weight gr. 450 Minimum working pressure 2,5 bar			
Operational characteristic		Fluid	Max working pressure (bar)	Temperature °C	Flow rate at 6 bar with Δp=1 (Nl/min)	Orifice size (mm)	Working ports size
		Filtered and lubricated air	10 bar	Min. -5°C Max. +50°C	1030 Nl/min	mm 7	G 1/4"

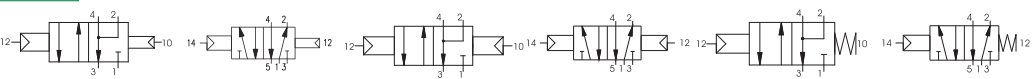
Pneumatic - Differential / Pneumatic - Pneumatic / Pneumatic - Spring

4/2
5/2

Ordering code
T514.1.00.F
TYPE
1 42 = 4 ways 52 = 5 ways
FUNCTION
F 16 = Pneumatic - Differential 18 = Pneumatic - Pneumatic 19 = Pneumatic - Spring



Weight gr. 140
Minimum pilot pressure
2,5 bar



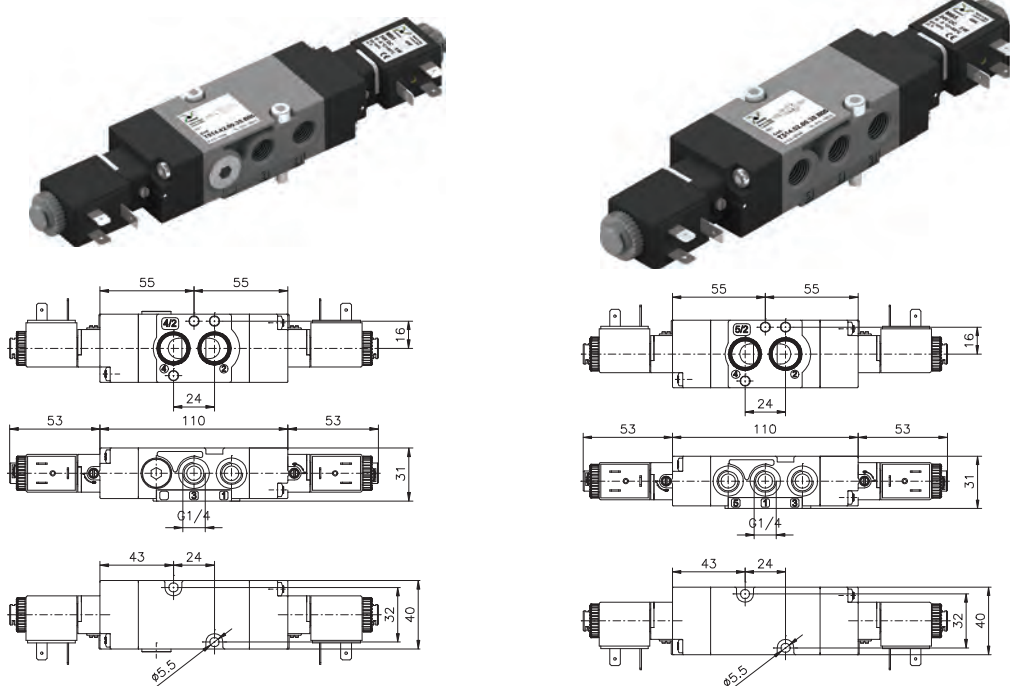
Maximum fixing torque
for fittings 9 N/m

Operational characteristic	Fluid	Max working pressure (bar)	Temperature °C		Flow rate at 6 bar with Δp=1 (Nl/min)	Orifice size (mm)	Working ports size
		Filtered and lubricated air	10 bar	Min. -5°C	Max. +50°C	1100 Nl/min	mm 8

Solenoid - Solenoid

4/2
5/2

Ordering code
T514.1.00.35.V
TYPE
1 42 = 4 ways 52 = 5 ways
VOLTAGE
B04 = 12 VDC B05 = 24 VDC
V B09 = 24 VDC (2W) B56 = 24V (50-60 Hz) B57 = 110V (50-60 Hz) B58 = 220V (50-60 Hz)



Weight gr. 250
Minimum pilot pressure 2.5 bar
Maximum fixing torque for fittings 9 N/m



Operational characteristic	Fluid	Max working pressure (bar)	Temperature °C		Flow rate at 6 bar with Δp=1 (Nl/min)	Orifice size (mm)	Working ports size
		Filtered and lubricated air	10 bar	Min. -5°C	Max. +50°C	1100 Nl/min	mm 8

2

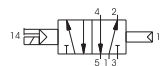
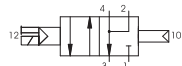
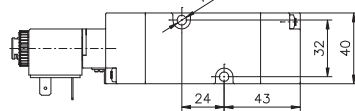
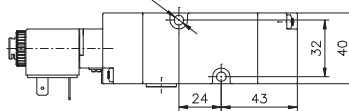
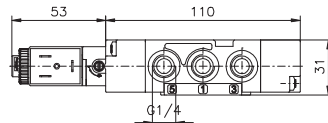
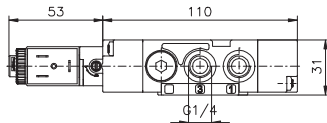
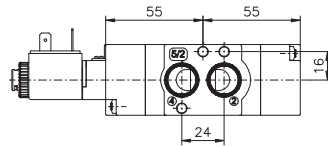
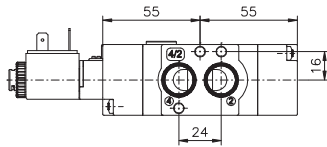
Solenoid - Differential / Solenoid - Spring

4/2
5/2

Ordering code

T514.1.00.F.V

- T** TYPE
42 = 4 ways
52 = 5 ways
- F** FUNCTION
36 = Solenoid - Differential
39 = Solenoid - Spring
- V** VOLTAGE
B04 = 12 VDC
B05 = 24 VDC
B09 = 24 VDC (2W)
B56 = 24V (50-60 Hz)
B57 = 110V (50-60 Hz)
B58 = 220V (50-60 Hz)



Weight gr. 200
Minimum pilot pressure 2,5 bar
Maximum fixing torque for fittings 9 N/m

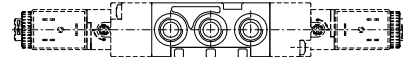
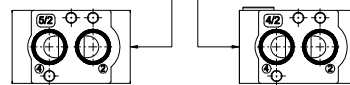
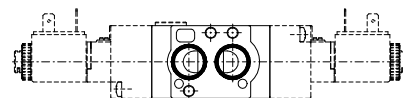
Operational characteristic	Fluid	Max working pressure (bar)	Temperature °C		Flow rate at 6 bar with Δp=1 (NI/min)	Orifice size (mm)	Working ports size
	Filtered and lubricated air	10 bar	Min. -5°C	Max. +50°C	1100 NI/min	mm 8	G 1/4"

Universal kit

Ordering code

T514.92.00.F.V

- F** FUNCTION
16 = Pneumatic - Differential
18 = Pneumatic - Pneumatic
19 = Pneumatic - Spring
35 = Solenoid - Solenoid
36 = Solenoid - Differential
39 = Solenoid - Spring
- V** VOLTAGE
B04 = 12 VDC
B05 = 24 VDC
B09 = 24 VDC (2W)
B56 = 24V (50-60 Hz)
B57 = 110V (50-60 Hz)
B58 = 220V (50-60 Hz)



Weight gr. 170
Minimum pilot pressure 2,5 bar
Maximum fixing torque for fittings 9 N/m



To change a 5/2 valve into a 4/2:
Simply replace the bottom plate with the one included in the universal kit (cod. T514.92....) and by plugging port 5

Operational characteristic	Fluid	Max working pressure (bar)	Temperature °C		Flow rate at 6 bar with Δp=1 (NI/min)	Orifice size (mm)	Working ports size
	Filtered and lubricated air	10 bar	Min. -5°C	Max. +50°C	1100 NI/min	mm 8	G 1/4"